

Analysis of Variance Report

Page/Date/Time 1 9/2/2004 7:46:47 AM
Database C:\Documents and Settings\Da ... DAVID\Densidad transectos.S0
Response T3_D_Intervenido

Analysis of Variance Table

Source		Sum of	Mean		Prob	Power
Term	DF	Squares	Square	F-Ratio	Level	(Alpha=0.05)
A: T1_D_No_interv.	2	7.706667E-02	3.853333E-02	0.31	0.752420	0.070536
S	3	0.3690667	0.1230222			
Total (Adjusted)	5	0.4461333				
Total	6					

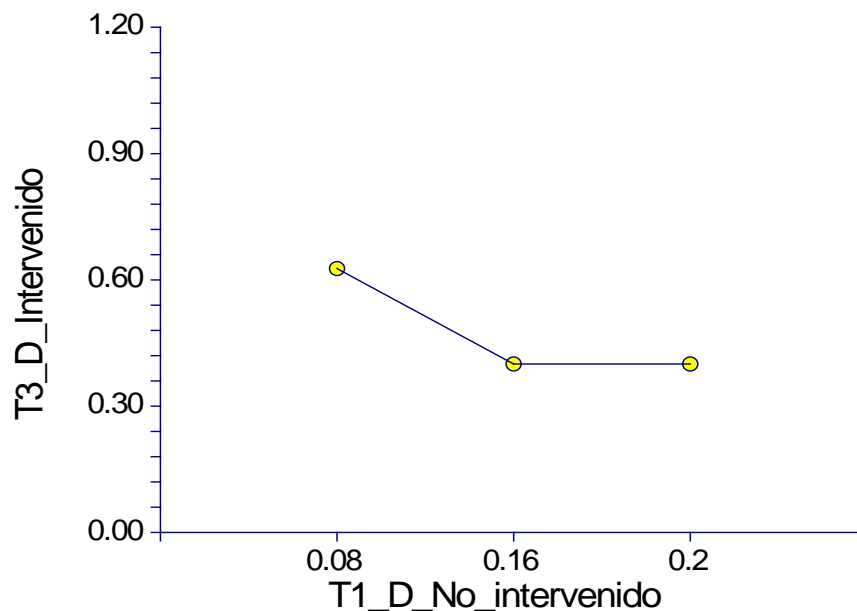
* Term significant at alpha = 0.05

Means and Effects Section

Term	Count	Mean	Standard Error	Effect
All	6	0.5133333		0.4755556
A: T1_D_No_intervenido				
0.08	3	0.6266667	0.2025029	0.1511111
0.16	1	0.4	0.3507452	-7.555556E-02
0.2	2	0.4	0.2480143	-7.555556E-02

Plots Section

Means of T3_D_Intervenido



Analysis of Variance Report

Page/Date/Time 2 9/2/2004 7:46:47 AM
Database C:\Documents and Settings\Da ... DAVID\Densidad transectos.S0
Response T4_D_Intervenido

Analysis of Variance Table

Source		Sum of	Mean		Prob	Power
Term	DF	Squares	Square	F-Ratio	Level	(Alpha=0.05)
A: T1_D_No_interv.	2	9.866667E-03	4.933333E-03	0.20	0.825330	0.063378
S	3	7.226667E-02	2.408889E-02			
Total (Adjusted)	5	8.213333E-02				
Total	6					

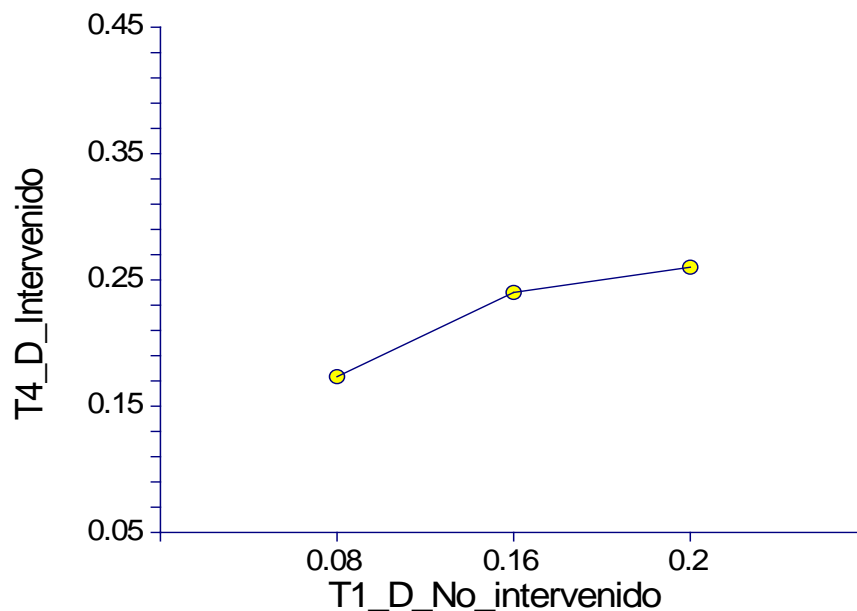
* Term significant at alpha = 0.05

Means and Effects Section

Term	Count	Mean	Standard Error	Effect
All	6	0.2133333		0.2244444
A: T1_D_No_intervenido				
0.08	3	0.1733333	0.0896082	-5.111111E-02
0.16	1	0.24	0.155206	1.555556E-02
0.2	2	0.26	0.1097472	3.555556E-02

Plots Section

Means of T4_D_Intervenido



Analysis of Variance Report

Page/Date/Time 3 9/2/2004 7:46:47 AM
Database C:\Documents and Settings\Da ... DAVID\Densidad transectos.S0
Response T6_D_Intervenido

Analysis of Variance Table

Source		Sum of	Mean		Prob	Power
Term	DF	Squares	Square	F-Ratio	Level	(Alpha=0.05)
A: T1_D_No_interv.	2	0.4101333	0.2050667	9.99	0.047187*	0.629095
S	3	0.0616	2.053333E-02			
Total (Adjusted)	5	0.4717333				
Total	6					

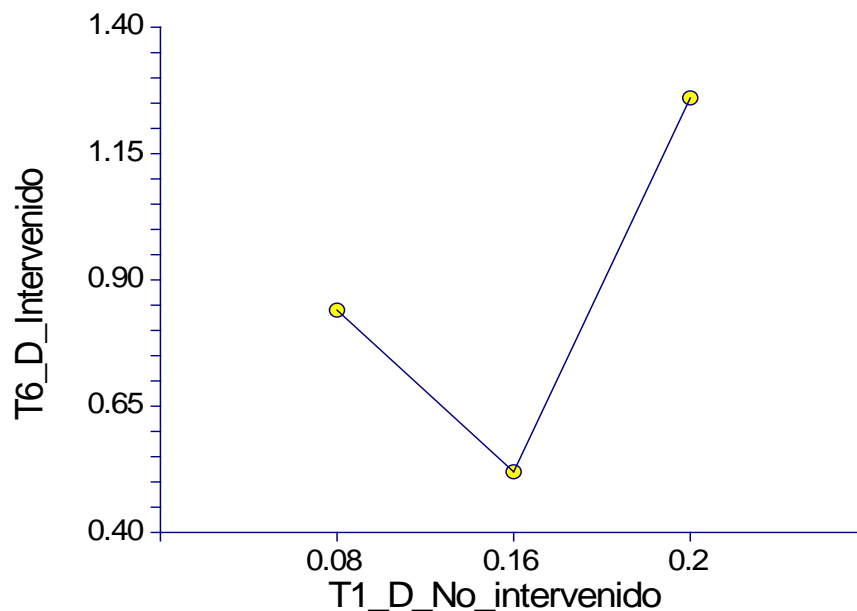
* Term significant at alpha = 0.05

Means and Effects Section

Term	Count	Mean	Standard Error	Effect
All	6	0.9266667		0.8733333
A: T1_D_No_intervenido				
0.08	3	0.84	8.273116E-02	-3.333334E-02
0.16	1	0.52	0.1432946	-0.3533333
0.2	2	1.26	0.1013246	0.3866667

Plots Section

Means of T6_D_Intervenido



Analysis of Variance Report

Page/Date/Time 4 9/2/2004 7:46:47 AM
Database C:\Documents and Settings\Da ... DAVID\Densidad transectos.S0
Response T7_D_Intervenido

Analysis of Variance Table

Source		Sum of	Mean		Prob	Power
Term	DF	Squares	Square	F-Ratio	Level	(Alpha=0.05)
A: T1_D_No_interv.	2	0.4152	0.2076	3.36	0.171701	0.276072
S	3	0.1856	6.186667E-02			
Total (Adjusted)	5	0.6008				
Total	6					

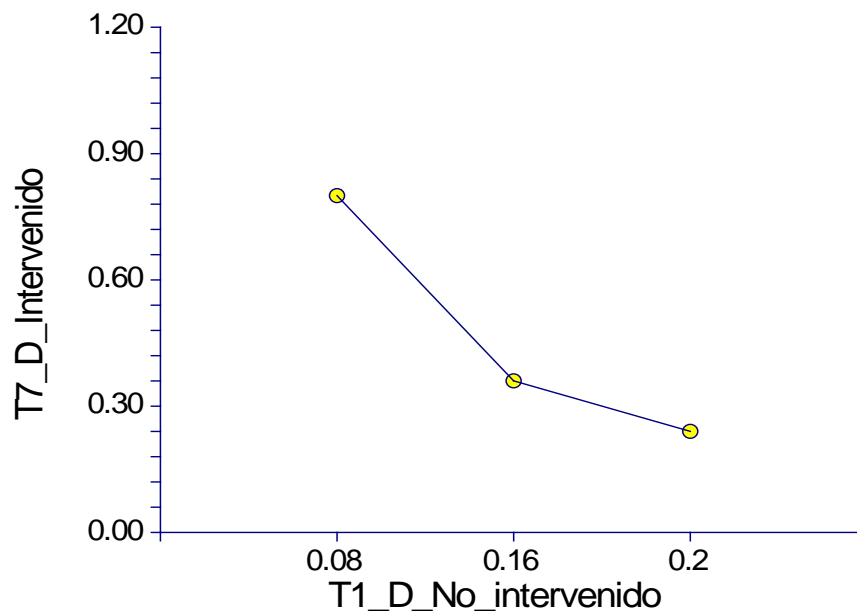
* Term significant at alpha = 0.05

Means and Effects Section

Term	Count	Mean	Standard Error	Effect
All	6	0.54		0.4666667
A: T1_D_No_intervenido				
0.08	3	0.8	0.1436044	0.3333333
0.16	1	0.36	0.2487301	-0.1066667
0.2	2	0.24	0.1758787	-0.2266667

Plots Section

Means of T7_D_Intervenido



Analysis of Variance Report

Page/Date/Time 5 9/2/2004 7:46:47 AM
Database C:\Documents and Settings\Da ... DAVID\Densidad transectos.S0
Response T8_D_Intervenido

Analysis of Variance Table

Source		Sum of	Mean		Prob	Power
Term	DF	Squares	Square	F-Ratio	Level	(Alpha=0.05)
A: T1_D_No_interv.	2	0.3501333	0.1750667	0.46	0.670024	0.080230
S	3	1.144267	0.3814222			
Total (Adjusted)	5	1.4944				
Total	6					

* Term significant at alpha = 0.05

Means and Effects Section

Term	Count	Mean	Standard Error	Effect
All	6	0.6		0.4911111
A: T1_D_No_intervenido				
0.08	3	0.8133333	0.356568	0.3222222
0.16	1	0.16	0.6175939	-0.3311111
0.2	2	0.5	0.4367048	8.888889E-03

Plots Section

Means of T8_D_Intervenido

